

## 19" 1RU Frame and Optical Passive Splitter



### User's Manual (OPSR-2, OPS-xyz)

**OPTICIS HQ**  
Opticis Co., Ltd.  
3F, 305, Sanseong-daero,  
Sujeong-gu,  
Seongnam-si, Gyeonggi-do, 13354  
South Korea  
Tel: +82 (31) 719-8033  
Fax: +82 (31) 719-8032  
[www.opticis.com](http://www.opticis.com)

For order support, please contact your Distributor or Reseller.

For technical support, check with the Opticis website [www.opticis.com](http://www.opticis.com) or contact [techsupp@opticis.com](mailto:techsupp@opticis.com)

# Welcome!

Congratulations on your purchase of the **19" 1RU frame, OPSR-2 and optical passive splitter, OPS-xyz**. This manual contains information that will assist you in installing and operating the product.

## Product Description

### 1. OPSR-2 and OPS-xyz

OPTICIS **OPSR-2**, 19" 1RU frame is an ideal solution for modular and systematic fiber-optic needs. Opticis new optical passive splitter, **OPS-xyz** distributes optical signal over single-mode fiber up to 16 channels without any active device or electrical power to maximize the efficiency and minimize the cost of digital signage installation. Two (2) units of **OPS-xyz** can be fitted into 19" 1RU frame, **OPSR-2** and for sure one unit can used as stand-alone type to save the installation space.



Fig. 1: OPSR-2 with two (2) OPS-216L (Rear)

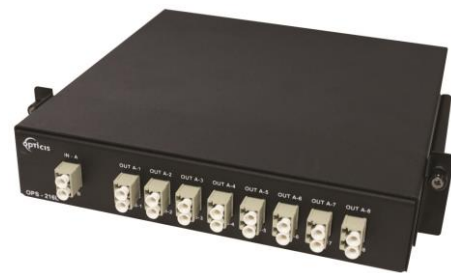


Fig. 2: OPS-216L



Fig. 3: OPSR-2 (Front)



Fig. 4: OPSR-2 (Rear)

[Note] \* Applicable Products with OPS-xyz are: DVFX-110, M1-201DA-TR, M1-203D-TR and M1-3R2VI-DU.

\*\* OPS-xyz is designed for single mode fiber distribution. Do not connect it with multi-mode fiber.

# Installation

**[Note]** The installation steps hereafter are explained by using of the OPS-216L, M1-201DA-TR and duplex LC patch cord.

## Step 1

Plug optical passive splitter, OPS-216L to any slots of back side of OPSR-2 and fasten it by thumb screw.



**Fig. 5: Plug & Fasten of OPS-216L**

※ Refer to the following configuration of optical passive splitter, OPS-xyz.

x (1 digit): The number of input fibers (1, 2, 4)

y (2 digits): The number of output fibers (04, 08, 16)

z: Connector type (S: SC connector, L: LC connector)

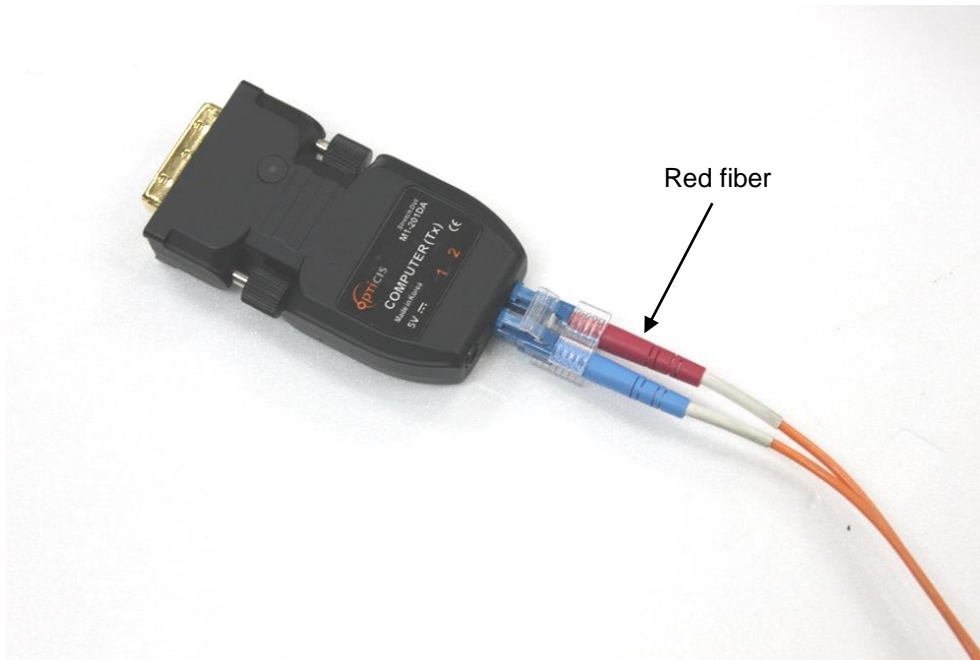
Items	Descriptions
OPS-104S	1x4 SC optical passive splitter
OPS-108S	1x8 SC optical passive splitter
OPS-116S	1x16 SC optical passive splitter
OPS-408S	4x8 (4ea of 1x2) SC optical passive splitter
OPS-208L	2x8 (2ea of 1x4) LC optical passive splitter
OPS-216L	2x16 (2ea of 1x8) LC optical passive splitter

**[Note]** DVFX-110 can be used with OPS-xzS (SC connection type) and M1-201DA-TR, M1-203D-TR and M1-3R2VI-DU can be used OPS-xyL (LC connection type).

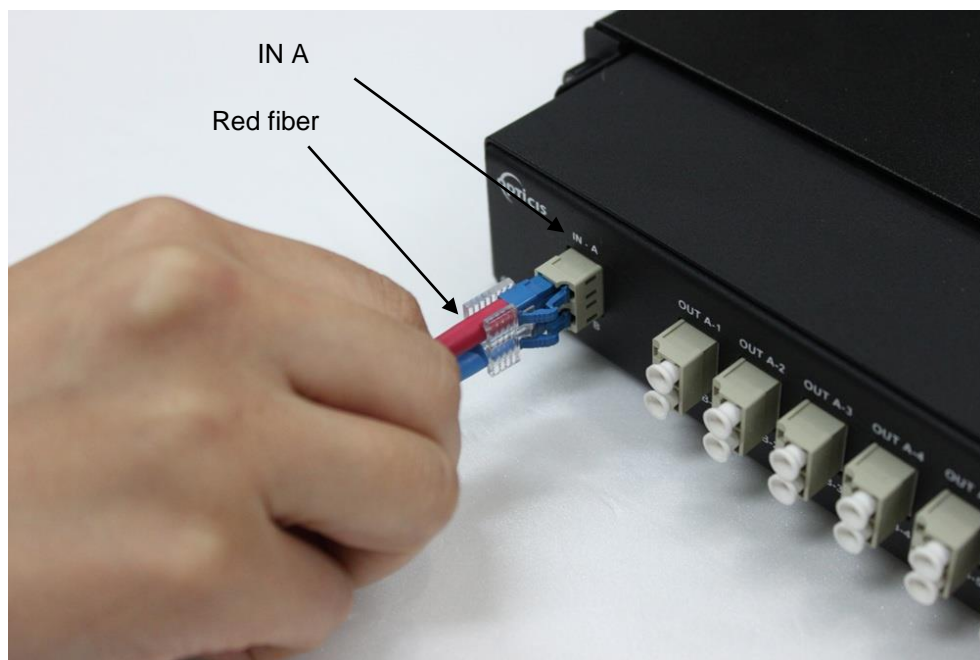
## Step 2

Take two (2) caps out of the receptacle of IN A and IN B.

Connect M1-201DA-T (transmitter) and the OPS-216L input LC receptacle (IN A & IN B) over duplex LC patch cord as shown in Fig. 6 & 7.



**Fig. 6: Connect LC patch cord into M1-201DA-T (Transmitter)**



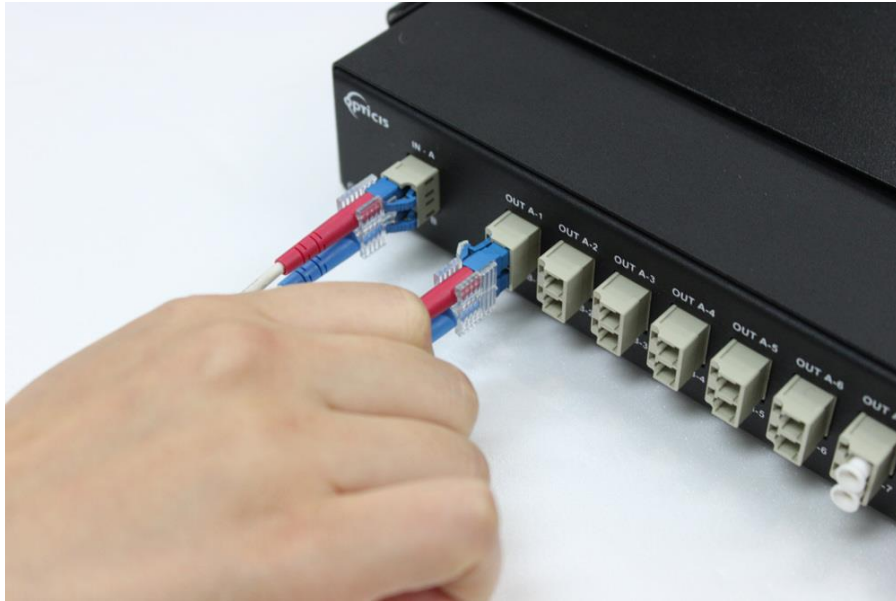
**Fig. 7: Connect LC patch cord into input receptacle**

**[Note]** In this case, please make sure the optical output signal #2 of M1-201DA-T is transmitted by red fiber and connected into upper row of OPS-216L input receptacle (IN A).

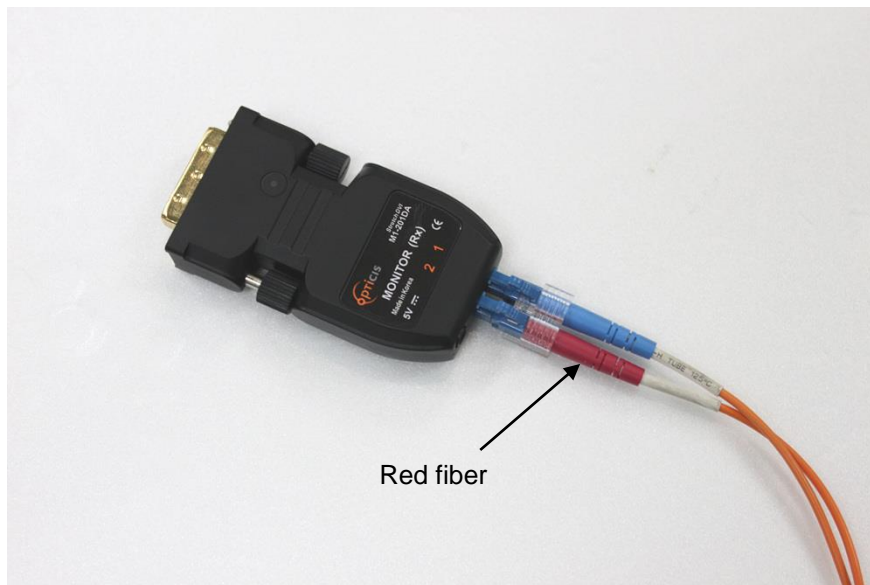
**Step 3**

Take all caps out of the output receptacles (from OUT A-1 to OUT B-8).

Connect M1-201DA-R (receiver) and the OPS-216L output LC receptacle (OUT A-1 & OUT B-1) over duplex LC patch cord as shown in Fig. 8 & 9.



**Fig. 8: LC patch cord into output receptacle**



**Fig. 9: Connect LC patch cord into M1-201DA-R**

**[Note]** In this manner, output port #2 of M1-201DA-T is distributed by OPS-216L and connected to input port #2 of M1-201DA-R over red fiber.

Connect another M1-201DA-R (receiver) and the output LC receptacle (OUT A-2 & OUT B-2) over duplex LC patch cords as described above and repeat it as many as you need.

**Step 4**

Connect M1-201DA-T (transmitter) to video source such as PC and connect all M1-201DA-R (receiver) into each monitor.

**[Note]** If you are not familiar with fiber optic extenders such as M1-201DA-TR, please refer to each user manual.